

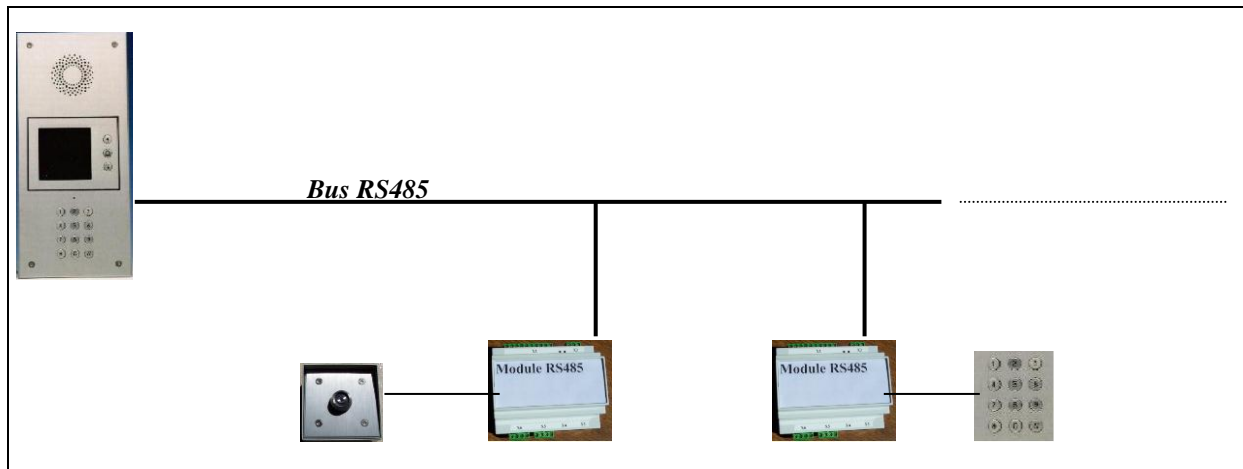
RS 485 MODULE

INSTALLATION and PROGRAMMING MANUAL

CONTENTS

1 - PRESENTATION	2
2 - INSTALLATION	2
3 - PROGRAMMING	4
4 - CONNECTIONS	9

1 - PRESENTATION



RS 485 module is requested to connect additional items like keypads or badge-readers to Telacces 2 via RS 485 Bus. A RS 485 module can drive one keypad, two badge-readers or one keypad and one badge-reader.

RS 485 module controls two relays, a real clock with 5 time-zones, and can memorise up to 2 000 badge-codes and access-codes. A RS 485 module can drive 2 doors.

RS 485 module is delivered in an ABS box, 115 x 85 x 58 mm (DIN rail mounting possible).

A maximum of 16 RS 485 modules can be connected to one Telacces 2.

RS 485 module need 12VDC, 45mA (110mA when the both relays latched).

2 - INSTALLATION

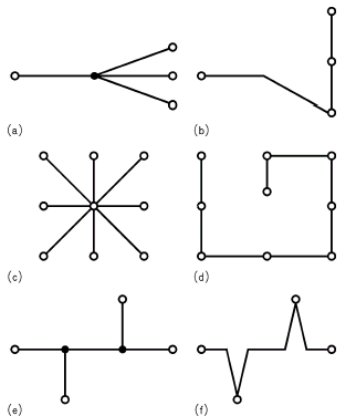
Connections:

- X1 : six points for the two relays (drives each maximum 2A / 12VDC),
- X1 : two points for exit-button on relay 1,
- X1 : two points for exit-button on relay 2,
- X5 : four points for Dallas® reader,
- X6 : four points for keypad or extra Dallas® reader, or MLP 3 from Noralsy,
- X7 : four points for RS 485 Bus,
- X2 : two points for power supply 12 V DC (if distance between module and Telacces 2 more than 40 meters).

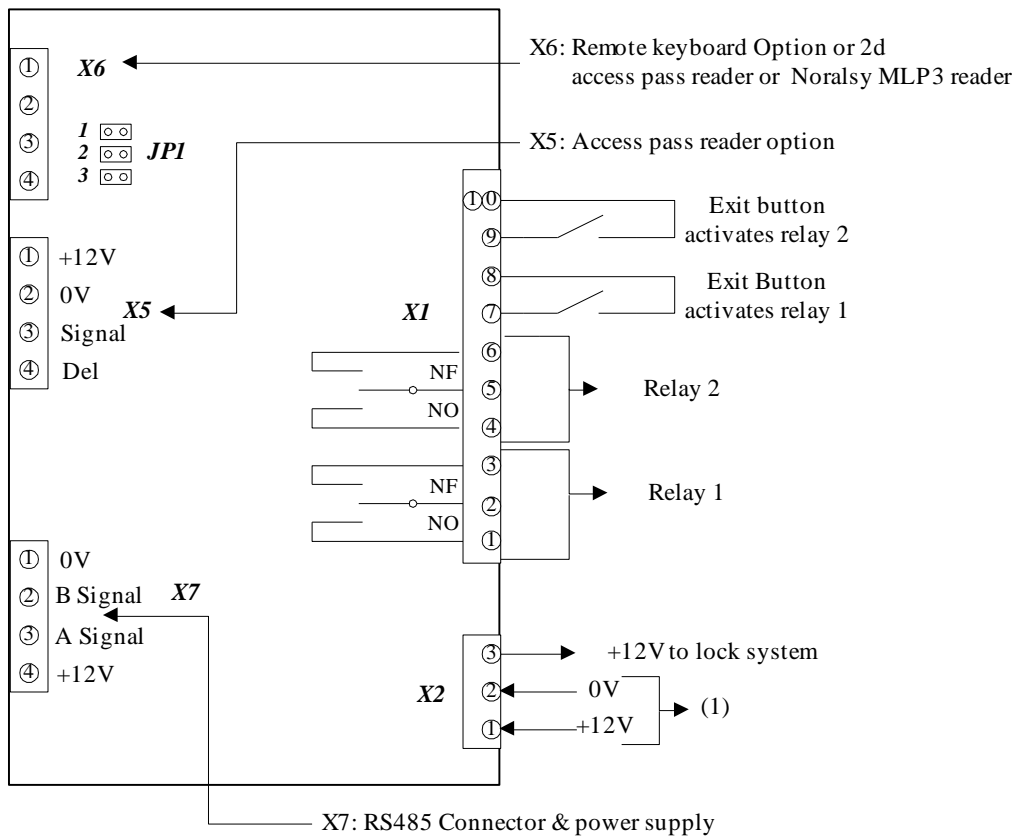
RS 485 module connects to terminal CN5 (RJ 45 connector) on a Telacces 2 using a CAT5E cable. Maximum distance between last RS 485 module and Telacces 2 is 1 000 m (using CAT5E cable).

Point 2 of X7 is B signal from RS 485 Bus ; point 3 of X7 is A signal from RS485 Bus.

The following cabling topologies can all be used to connect RS 485 modules to each other. Topologies (b), (d) and (f) are recommended.



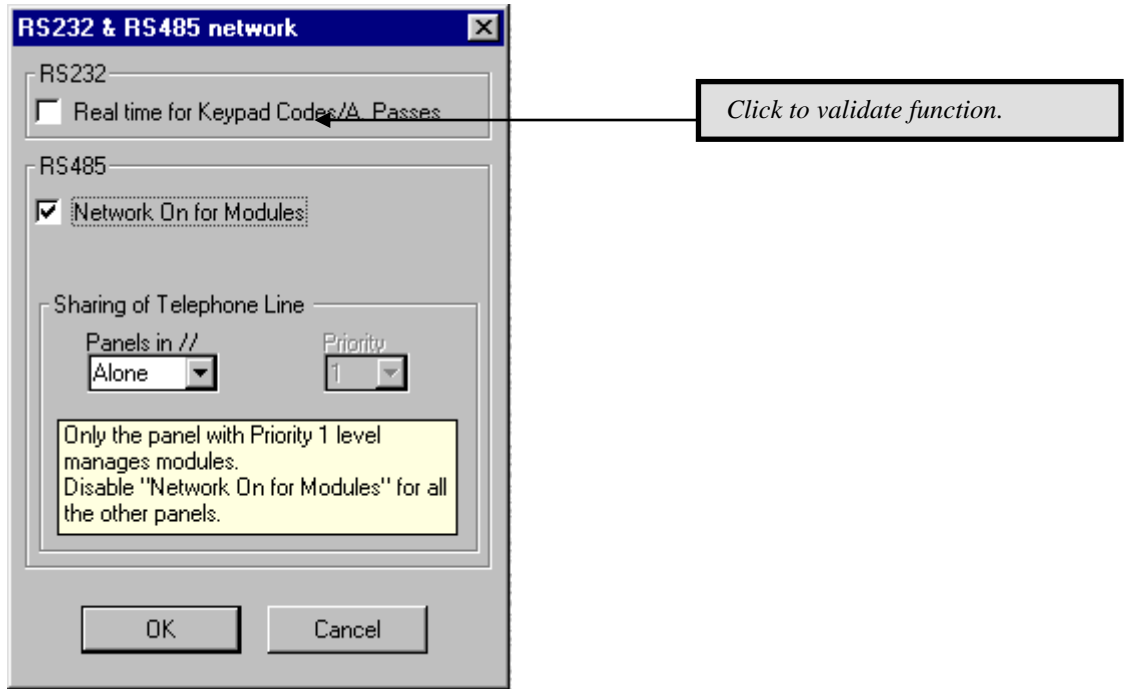
Note : if the RS 485 module is installed more than 40 meters from Telaccess 2, 12 V DC power supply are requested for the module.



JP1 :
 On 1, if a keypad connected to X6,
 On 2, if a keypad and a badge-reader to X6,
 On 3, if only a badge-reader connected to X6.

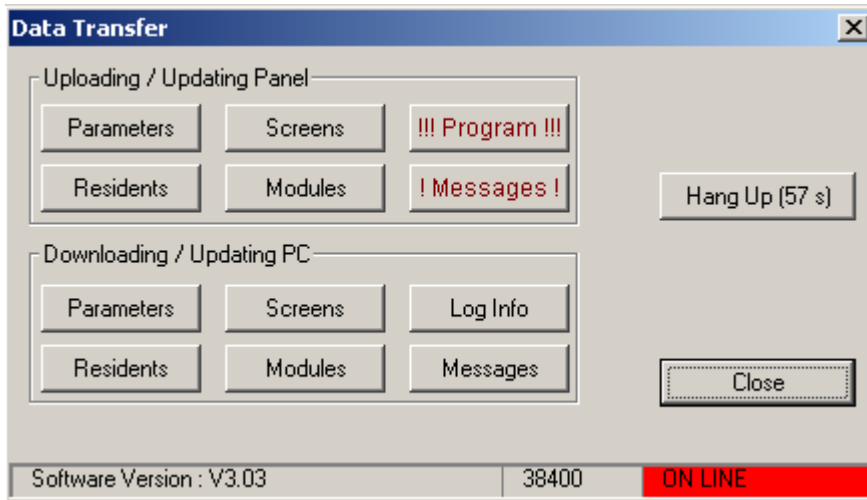
3 - PROGRAMMING

Programming of RS485 module is done via RS485 Bus.
IMPORTANT ! : necessary first to activate RS485 Bus.

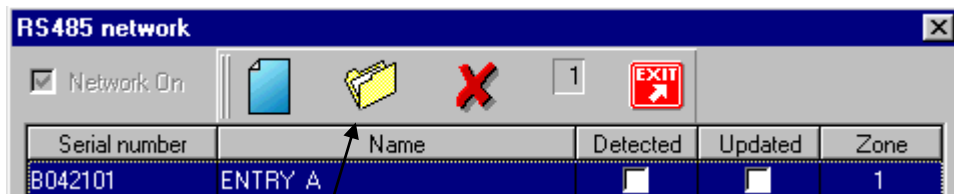


Don't forget to send new programming to TELACCES 2.

At first connection, RS 485 module(s) send information to Telacces 2.
To program RS 485 module(s), first read all of them by clicking « Downloading Modules » in the Updating PC page.



Back in the page « RS 485 network ». The RS 485 modules now appears on the screen.
Highlight the module to program and click on Open.



To open the module folder

A new page named « Access Control Module » is now opened.

IMPORTANT ! : don't forget to tick «On» to allow using of this module.

The screenshot shows the 'Access Control Module' configuration window. The 'Name' field is set to 'ENTRY A'. The 'On' checkbox is checked. The 'Zone' dropdown is set to '1'. The 'Period Type' dropdown is set to 'None'. The 'Relay 1' section has 'Relay operates (secs)' set to 5. The 'Input 2' section has 'Activates' set to 'Relay / Output 2'. The 'Relay 2' section has 'Operation' set to 'Independent'. The 'Keypad / A. Passes' section has 'Keypad code' and 'Relay operates (secs)' set to 5. The 'Keypad Errors' section has 'Keypad Errors' set to 2 and 'Keypad lock-out for' set to 60. A yellow banner at the bottom reads: 'Uploading of Modules/Residents automatically activates update of all modules on RS485 network.' The 'OK' and 'Cancel' buttons are visible. The serial number is 'B042101'. Callouts point to the 'Name' field, 'On' checkbox, 'Zone' dropdown, 'Periods' button, and 'Period Type' dropdown. A separate dropdown menu for 'Period Type' is shown below, with options: 'None', 'Module', 'A', 'B', 'C', 'D', and 'None'.

Enter the name of module

Assign each module to a different zone (1 to 8).

Click to program the period types of the module

Select period in choosing on in the list.

There are 8 Zones which are used to differentiate and authorise/restrict access as required.

For example :

- Door A (Parking access) associated with Zone 1,
- Door B (Technical room) associated with Zone 2,
- Door C (Garden access) associated with Zone 1.

If the resident is authorised for Zone 1, that means door A (Parking) and door C (garden).

5 Time Zones are available for RS 485 modules : A, B, C, D and Module.

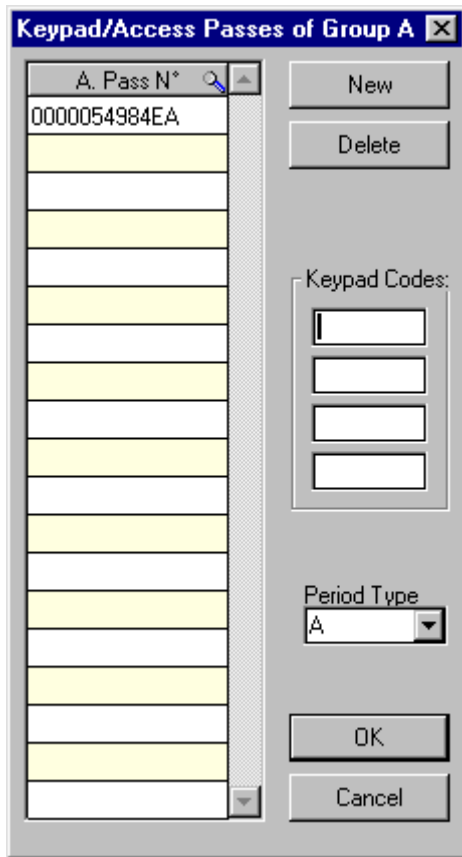
Note : Telaccs 2 is no part of any of these 5 Time Zones.

Time Zone type « Module »

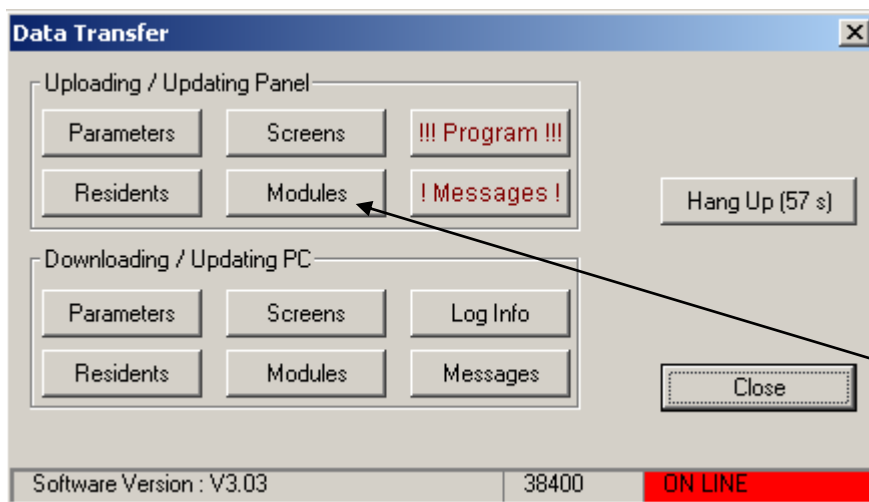
For Time Zones A, B, C and D, it is necessary to enter the relevant keypad access-codes or access-badges serial numbers.

Click to open Access passes or keypad codes page

Each Period types should have a different name and has their own Access Passes and keypad codes.



Now necessary to upload new modules programming to Telacces 2 by clicking « Modules » in the window Upload.



Click to update programmations of modules.

Note:

It is not possible to connect any RS 485 module to a Telacces 2 equipped with option extra 64 call-buttons.

4 - CONNECTONS

Terminals	Points (*)	Function
X2	2	+12VDC if external power supply required
	3	0V
	4	+12VDC for lock system
X1	8	Relay 1 (NO in 8 & 9, NC in 9 & 10)
	9	
	10	
	11	Relay 2 (NO in 11 & 12, NC in 12 & 13)
	12	
	13	
	14	Exit Button for relay 1
	15	
	16	Exit Button for relay 2
17		
X7	20	+12VDC
	21	A Signal (RS485)
	22	B Signal (RS485)
	23	0V
X5	27	Del
	28	Signal
	29	0V
	30	+12VDC
X6	32	Del (for badges reader), unused for keypad
	33	Signal
	34	0V
	35	+12VDC